



A monthly publication of the Clear Lake Gem & Mineral Society

VOLUME 47

August 2021

NUMBER 8



NEXT MEETING: **TUESDAY**, August 17, 2021
TIME: 7:00 p.m.
LOCATION: League City Library
 100 W Walker St,
 League City, Tx 77573

INSIDE THIS ISSUE

| | | |
|--|-----|---|
| June Meeting | 1 | <p><u>AUGUST MONTHLY MEETING</u></p> <p>Our August meeting will at the League City Library Tuesday, August 17, 2021 at 7:00 pm.</p> <p>We will have a Guest Speaker Ms. Misty Paul, a local artist from La Porte, Texas. Please come and join us for this wonderful event.</p> <p>Show reports and show and tell (if time permits).</p> <p>http://www.clgms.org/</p> |
| Board/General Meeting Minutes Upcoming events | 2 | |
| Field Trip Larimar | 3-4 | |
| Upcoming shows | 5 | |
| | | |

MINUTES OF THE July CLGMS GENERAL MEETING (7/20/2021)

The proposed workshop room at the Creator Space were discussed but there was no decision made yet. We are still interested, however, some more details are still needed.

We will evaluate all the equipment that need to be repaired will determine on what kind of up upgrade to the room is necessary.

We discussed the planning for our upcoming show in August.

We still need volunteers to help running the show – volunteer sheet is posted on the web site.

MINUTES OF THE August CLGMS BOARD MEETING (8/2/2021)

Preparation for the August show:

-U-Haul has been booked – a 15 footer should be large enough since we are not going to have display cases.

-Security has been set up and will be provided by the Pasadena Police Department.

-Postcards had been made and sent out early. The pads will be distributed during July General meeting.

For the August 2021 show – Currently we have 38 vendors confirmed with a total of 194 tables.

We will have the same children activities: Gem Mine, Dinosaur Rock Show and Scout Sessions.

Charlie will pick up one of the Genie to check out and hopefully do some repairs if needed.

We will have our 2021 Annual Show on August 7-8, 2021.

REMINDER:**Upcoming events - We are looking forward to the following programs.**

We will have a Guest Speaker, Ms. Misty Paul – she creates epoxy resin wall art and functional pieces from her home studio in La Porte, Tx. Most of her work focuses on the beach using sand and shells she collects, and geodes inspired pieces using real gemstones. She will be sharing how she creates such beautiful artwork with us.

Show and tell (time permits)

Show us what did you buy at our annual show.

Field Trips Announcement

Trina will be leading a field trip to Texas City Dike for shark's teeth dig on

Wednesday, August 18 at 5:30 pm.

We will meet at the road next to the dike - Kite Board Beech.

Free entry and free parking on weeknights. Please bring snack and water.

<http://maps.google.com/maps?q=29.40517,+94.88849+%28Coordinates%29&iwloc=A&hl=en>

clgms@yahoo.com or call/text: 713-815-0275

Larimar

From Larimarket.com

What Is Larimar?

There is so much more to know about Larimar than just that it is one of the most beautiful gemstones in the world.

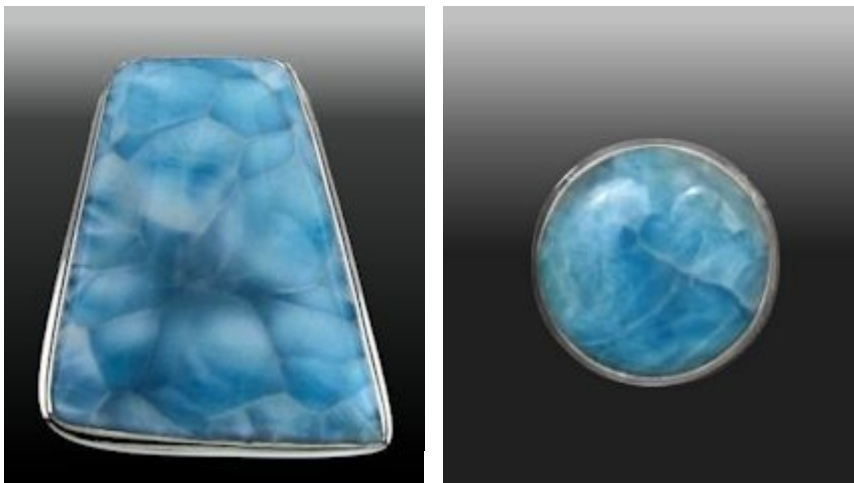
First of all – it's one of the most rare, too! LARIMAR is found in only one place in the world - one square kilometer (approximately ½ square mile!) in the mountains above Baoruco in the Dominican Republic!

LARIMAR is a volcanic stone, the result of volcanic activity that occurred millions of years ago! It's a form of pectolite, and although pectolite is found in nearly every hemisphere, none have the unique volcanic blue coloration of Larimar. Pectolite is normally gray or white, yet pectolite from that one location in the world is a beautiful blue pectolite – that which we know and love as Larimar!

It is awe-inspiring to ponder the fact that the series of events that created this beautiful blue wonder have only occurred one time, in one place throughout the history of the world! Amazing!

Larimar's beautiful colors mirror the blue and white shades of the ocean and sky. No two stones are alike; each piece is unique, with its own natural beauty.

Its colorations vary from white, light-blue, green-blue to deep blue, from translucent to dark.



Some have likened the patterning found on Larimar stones to Rorschach tests.

What do you see in the stone?

A flower? A dolphin? A tree? A beautiful blue sky with clouds? An underwater seascape?



The blue and green come from traces of copper.

Turtleback patterning is named because the pattern in the stone mimics the back of a turtle.

Some stones include “scenic” pieces with red plumes (from iron) – often making a fern-like design.

But the beauty of Larimar is in the beholder. Its colors vary from the lightest sky blue to the darkest of ocean blues. When picking the right Larimar piece for you - whichever piece moves you is the right and best piece of Larimar.

LARIMAR IS ALSO CALLED

the Atlantis Stone. A very strong defender of the notion that part of Atlantis could be found in the Caribbean was the psychic Edgar Cayce. For this reason, many look at Hispaniola (Haiti and the Dominican Republic) as a remnant of sunken Atlantis.

Cayce predicted that on one of the Caribbean islands a blue stone would be found with extraordinary healing attributes! It should be noted however, that this point is disputed by some.

Larimar is also called the Dolphin Stone and most recently has been called the “Lucky Stone” especially after a woman, down on her luck, bought a Larimar ring, ended up meeting her soul-mate and then winning the lottery! (Your results may vary!).

| SCFMS and MEMBER CLUB GEM SHOWS | | | |
|--|---|---|---|
| Aug: Clear Lake Gem and Mineral Society (Pasadena, Tx) 8/7 – 8/8 http://www.clgms.org/ Baton Rouge (Baton Rouge, LA) 08/14-15/21 Ark-La-Tex (Bossier City, LA) 08/21-22/21 | Sept: Lubbock (Lubbock, TX) 10/9-10/21 | Oct: Tri-City (Temple, TX) 10/02-23/21 G&MS of LA (New Orleans, LA) 10/9-10/21 Austin (Austin, TX) 10/22-24/21 Cowtown-CERA (Ft Worth, TX) | Nov Golden Spread (Amarillo, TX) Paleontological Society(Austin, TX) 11/06-07/21 Midland (Midland, TX) Houston (Houston, TX) 11/12-14/21 Dallas (Dallas, TX) 11/20-21/21 |
| Dec: DeRidder (Leeville, LA) | | | |
| | | | |
| | | | |
| | | | |
| | | | |
| | | | |
| | | | |
| STONEY STATEMENTS Clear Lake Gem and Mineral Society, Inc PO BOX 891533 Houston, Texas 77289 | | | |

Meeting 3rd Tuesday of the Month

7:00 P.M.

League City Library

100 W Walker St, League City, Tx 77573



Member of

Next Annual Show

February 26-27, 2022

Pasadena Convention Center

CLGMS is on the Web:

<http://www.clgms.org>

2/26-27, 2021

American
Federation of
Mineral SocietiesSouth Central
Federation of Mineral
Societies**Clear Lake Gem and Mineral Society, Inc**

MEMBER: American Federation of Mineralogical Societies and South Central Federation of Mineral Societies

PURPOSE: To promote education and popular interest in the various earth sciences; in particular in those hobbies dealing with the art of lapidaries and the earth sciences of minerals, fossils and their associated fields.

| | | | |
|----------------|---------------------|---------------------|----------------|
| 2021 OFFICERS: | President | John Caldyne | 832-282-4270 |
| | Vice President | Cynthia McGowan | 281-546-2662 |
| | Secretary | Christina Rankin | 281-723-5408 |
| | Treasurer | Morgan Davies | 281-224-2444 |
| | Program Director | VACANT | |
| | Board of Directors: | Sandra Christiansen | Jerry Newberry |
| | | Jim Edwards | Jim Hawkins |
| | | Donna Nelson | |
| | Newsletter Editor | Sara Tanner | |
| | | David Tjiok | |

| | | | |
|----------------------------|---------------------|----------------------------|--------------------|
| Annual Show 2022 | Sandra Christiansen | Membership..... | David Tjiok |
| Constitution & Bylaws..... | Sara Tanner | WWW System Admin.. | Mike Flannigan |
| Community Benefits..... | Charlie Timme | Refreshments..... | John Caldyne |
| Historian..... | David Tjiok | Education/Field Trips..... | Annabel Brownfield |
| Publicity..... | Annabel Brownfield | | |
| Facebook..... | Cynthia McGowan | | |

Membership Dues Jan. to Dec. 2021: Adult \$15:00, \$5.00 per additional adult at same address, Junior \$5.00, \$5.00 per member with adult at same address, Family Dues \$20.00 (4+) at same address. Send Dues to CLGMS, PO BOX 891533, Houston, TX, 77289