



**NEXT MEETING:** **Tuesday, Nov 15, 2022**

**TIME:** **7:00 p.m.**  
**LOCATION:** **Helen Hall Library**  
**100 W Walker St.**  
**League City, Tx 77573**

## INSIDE THIS ISSUE

November Monthly Meeting	1	<a href="#"><u>November MONTHLY MEETING</u></a>
Board/General Meeting Minutes Field Trips/Events	2	We will be planning for our Christmas dinner. Please also bring something for a 5 minutes show and tell. Please come and join us.
Meeting Presentation	3	<a href="http://www.clgms.org/"><u>http://www.clgms.org/</u></a>
Crocoite	4	Our next show will be March 18-19, 2023.
SD Gypsum Mine	4-6	Please check out our Facebook page: Clear Lake Gem and Mineral Society
Nov Birthstone Benitoite	6	<a href="https://www.facebook.com/clgms/"><u>https://www.facebook.com/clgms/</u></a>
Upcoming shows	7	



## Minutes Of The October CLGMS General Meeting

Clear Lake Gem and Mineral Society General Meeting at League City Library 10/18/2022.  
11 Members attended the meeting.

50 Vests came in and we have a lot in different sizes, all we need to do now is have somebody who can sew on the patches.

Any volunteers, these will be the large patch on the back and the smaller one in the front?  
David will get the patches from the storage area.

Bags have not been ordered yet but are going to be ordered soon.

Wood working at the high schools can use the display cases to either fix up for their schools or for extra wood for projects.

Postcards are ready to send out.

We need someone to sit at our table at the Houston Gem and Mineral Show in Humble.

Next meeting we will finalize where we are going to eat for our Holiday meeting in December.

## Minutes Of The November CLGMS Board Meeting

Clear Lake Gem and Mineral Society Board Meeting at Panera Bread on 11/1/2022.

Six members attended the board meeting.

David will bring the club information to the Houston Gem & Mineral Show this weekend.

Since Red River was already booked on the night that we wanted we have a new place to go to. The date and the time will still be the same, the name and address are as follows:

Barcenas Mexican Restaurant  
2200 W. Bay Area Blvd. Unit B  
Friendswood, TX 77546

---

## **Field Trips Announcement**

Currently – no field trips are scheduled. Several field trip sites are being considered in the fall.

If you have a good location for our club field trip – please contact:  
[annabel.brownfield@gmail.com](mailto:annabel.brownfield@gmail.com) or call/text: 281-486-1866.

---

The CLGMS Christmas party will be 12/13/2022 at 6:30 PM at:

Barcena's Restaurant  
2200 W Bay Area Blvd; Unit B  
Friendswood, TX 77546

Please bring a spouse or family members and come join us.

Click Here for a Map of Barcena's  
<https://tinyurl.com/2733p99b>

CLGMS will pay for meals and non-alcoholic drinks.



## The November Meeting Presentation


Tuesday, November 15th @ 7 pm  
Helen Hall Library in League City

# Opals, Opals, & Opals [Oh My!]

Come learn about Opals, the different kinds and what to look for when purchasing them from our speaker

**Anthony Torres, of  
Alchemy of Harvest Moon**

The Clear Lake Gem & Mineral Society  
[www.clgms.org](http://www.clgms.org)



### Opals, Opals, & Opals (Oh My!)

Opals are some of the most amazing gems in the world, with some of the most interesting and intense color play of any stone. Come to our November 15th meeting where Anthony Torres of “Alchemy of Harvest Moon” will be talking about the different kinds of opals, the geology of opals, and things to know when purchasing one.

Opals can be found all over the world, but the highest quality come out of Australia. Other well-known opals come out of Ethiopia, Honduras, Mexico, and several states here in the USA. Please come to the meeting at 7 pm on the 3rd Tuesday of the month at Helen Hall Library in League City to see this great presentation.

To reach Anthony for further information, please contact him at:

Email - [Anthonytorres808.at@gmail.com](mailto:Anthonytorres808.at@gmail.com)

Phone number - 832-855-9733

Instagram - [the.bearded.rock.alchemist](https://www.instagram.com/the.bearded.rock.alchemist)

Facebook - Anthony Torres

---



## ***CROCOITE***

*By Bob Farrar*

*Crocoite is a somewhat rare mineral that not all collectors are familiar with. It is, however, a very beautiful mineral that makes a fine addition to any collection.*

*Crocoite consists of lead chromate,  $PbCrO_4$ . It crystalizes in the monoclinic system, and typically forms prismatic (long and slender) or acicular (needle-like) crystals. Its most distinctive characteristic is its color, typically brilliant orange to orange-red. It is named for its color, from the Greek word for saffron, like crocus, the flower from which saffron comes. It is rather brittle, so care must be taken in handling crocoite. Other physical properties include a hardness of 2.5 to 3.0, a specific gravity of 5.9 to 6.1, and poor cleavage. Color and crystal form are generally sufficient to distinguish crocoite.*



*Crocoite occurs in the weathered zones of lead deposits in the presence of chromium-bearing rocks. Neither lead nor chromium are particularly rare, but they tend to occur in different geological settings, which makes crocoite rare. By far the most important locality for crocoite is Dundas, Tasmania. There crystals up to 6 inches long have been found, along with great numbers of lesser specimens. A huge find was made at the Adelaide Mine in Dundas in 2010. Crocoite was*

*originally found, however, in the Ural Mountains of Russia. Callenberg, Saxony, Germany is another well-known locality. US localities are not as well known, but they include the Mammoth Mine in Tiger, AZ, the Darwin Mine in Inyo Co., CA, and the Eldorado Mine in Riverside Co., CA.*

*The rarity and beauty of good crocoite specimens makes them highly prized by collectors. Larger specimens, as might be expected, can be quite expensive. However, thanks mainly to the rich deposits of Tasmania, there are enough more modest specimens on the market that most serious collectors can add crocoite to their collections.*

*(Photo courtesy Glendale Community College)  
Star-O-Lite 11/11 via The Rostrum 20 (4) July, 2011*

---

## A Subdivision is built over a gypsum mine in Black Hawk, South Dakota

About a dozen houses in Black Hawk, South Dakota, were evacuated after a sinkhole opened under the Hideaway Hills development. The ground started to give way on the 27th of April and while it has left a lot of uncertainty for the locals, the situation has led to a unique discovery. The residential homes were built over an abandoned gypsum mine.



The authorities are already trying to figure out how this could've happened but in the meantime, explorers of a local caving group called *Paha Sapa Grotto* decided to take a look inside.

“We determined that the mine was over 2,000 feet long and over 150 feet wide. It went directly under at least 12 homes”



The residents are seeking more than \$35,000,000 in compensatory damages, \$40,000,000 in exemplary damages, and “such other relief as the court deems equitable”

Get the whole story here:

<https://www.boredpanda.com/sinkhole-south-dakota-black-hawk-old-gypsum-mine/>

Location of Hideaway Hills subdivision

[http://maps.google.com/maps?q=44.14827,+103.30503+\(Coordinates\)&iwloc=A&hl=en](http://maps.google.com/maps?q=44.14827,+103.30503+(Coordinates)&iwloc=A&hl=en)



Image credits: Dan Austin/Paha Sapa Grotto



## November Birthstones

[www.americangemsociety.org](http://www.americangemsociety.org) › opal-history

### TOPAZ



In shades of yellow, brown, honey, green, blue, red, pink and sometimes no color at all, Topaz has a mass appeal. Topaz is often found in an amber gold, yellow, or a blushing pink orange but a pale pink or a sherry red Topaz is very exceptional. The most prized color of Topaz is called Imperial Topaz and features a magnificent orange with pink undertones. Blue, once the most rare color of Topaz, is the most common today due to man's ability to enhance its color; Topaz with a naturally blue color is very rare.

The ancient Egyptians and Romans associated this golden gem with the sun god giving it the power to protect and heal. Legend says that topaz dispels enchantment. With its worldwide mass appeal throughout the centuries, once you find that perfect Topaz you'll soon be under its spell.

---

### Benitoite

by Bennert Yamanaka (7), Three Rivers Gem & Mineral Society

From: *The Strata Data*, 7/2010

(6<sup>th</sup> Place – AFMS Junior Articles, under 12)

I chose this mineral because it sounds like it has my name in it. The composition is  $\text{BaTiSiO}_6$ . Benitoite is very rare and very blue. It is a barium titanium silicate mineral. It looks cool under a black light. When you put it under the light it turns light blue. It is the state mineral of California. It is found in Japan, Arkansas, and California.

It got its name from a lake in Benoit County California. It was one of the first minerals/gems to use x-ray crystallography. James Couch was the first one to discover benitoite. He thought it was sapphire, but it turned out to be a mineral. Its name and color are different from others that might look like it. When you scratch it on paper, you see white. The hardness scale score makes it different from the others. It is 6 to 6.5. The crystal system has six sides -- a hexagon. This mineral is good for glowing and looking at, and decoration. The color, size, and shape make it interesting.

**Source:**

[www.benitoitemine.com](http://www.benitoitemine.com)



## SCFMS and USA GEM SHOWS

## Nov:

5-6 AMARILLO, TX, Golden Spread GM&TS, Amarillo Civic Center Complex

11-13 HUMBLE, TX, Houston G&MS, Humble Civic Center  
<https://hgms.org/>

19-20 MESQUITE, TX, Dallas G&MS, Mesquite Convention Center  
<https://www.dallasgemandmineral.org/>

## Dec :

2 – 4 Montgomery Gem & Mineral Garret Coliseum, 1555 Federal Drive, Montgomery, AL 36107

[Map](#)

10-11, Leesville, LA, DeRidder G&MS, West LA Forestry Fair Grounds,  
<https://www.rockngemswla.com/>

11-13, Pascagoula, Mississippi Jackson County Fairgrounds, 2902 Shortcut Rd

Email: [mgcgms@bellsouth.net](mailto:mgcgms@bellsouth.net)

Website: [mgcgms.org](http://mgcgms.org)

## Jan :

6-8—: Mesa, AZ Mesa Community College, 1833 W. Southern Ave;  
 Contact Dana Slaughter  
[dsminerals@aol.com](mailto:dsminerals@aol.com)  
[flaggmineralfoundation.org](http://flaggmineralfoundation.org)

21-22—Fredericksburg, TX Lady Bird Johnson Park, Pioneer Pavilion, Hwy. 16 South;

Contact Frank Rowell (325) 248-1067

[hcgms20@gmail.com](mailto:hcgms20@gmail.com)  
[fredericksburgrockhounds.org](http://fredericksburgrockhounds.org)

## STONEY STATEMENTS

Clear Lake Gem and Mineral Society, Inc

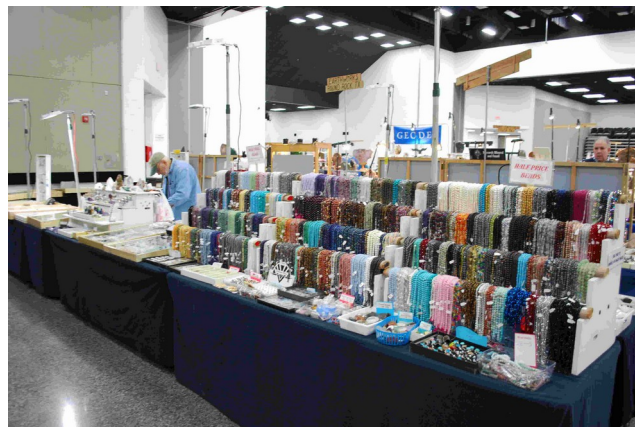
PO BOX 891533  
 Houston, Texas 77289

Meeting 3rd Tuesday of the Month

7:00 P.M.

League City Library

100 W Walker St, League City, TX 77573







### Member of

#### Next Annual Show

March 18-19, 2023

Pasadena Convention Center

CLGMS is on the Web:

<http://www.clgms.org>

FACEBOOK: CLEAR LAKE GEM AND  
MINERAL SOCIETY.



American  
Federation of  
Mineral Societies

South Central  
Federation of Mineral  
Societies

### Clear Lake Gem and Mineral Society, Inc

MEMBER: American Federation of Mineralogical Societies and South Central Federation of Mineral Societies

PURPOSE: To promote education and popular interest in the various earth sciences; in particular in those hobbies dealing with the art of lapidaries and the earth sciences of minerals, fossils and their associated fields.

2022 OFFICERS:	President	Cynthia	281-546-2662
	Vice President	McGowan	832-423-4802
	Secretary	David Tjiok	281-723-5408
	Treasurer	Christina Rankin	281-224-2444
	Program Director	Morgan Davies	
	Board of Directors:	VACANT	John Caldye
		Sandra	Jim Hawkins
	Newsletter Editor	Christiansen	
		Jim Edwards	
		Donna Nelson	
		David Tjiok	

Annual Show 2023 .....	Sandra Christiansen	Membership.....	Mike Flannigan
Constitution & Bylaws.....	Jim Hawkins	WWW System Admin..	Mike Flannigan
Community Benefits.....	Charlie Timme	Refreshments.....	James Brittenham
Historian.....	David Tjiok	Education/Field Trips.....	Annabel Brownfield/
Publicity.....	Annabel Brownfield		James Brittenham
Facebook.....	Cynthia McGowan		

Membership Dues Jan. to Dec. 2022: Adult \$15:00, Family Dues \$20.00 (4+) at same address. Send Dues to CLGMS, PO BOX 891533, Houston, TX, 77289