

A monthly publication of the Clear Lake Gem & Mineral Society

VOLUME 40

SEPTEMBER 2013

NUMBER 9



**NEXT MEETING TIME:** September 16, 2013  
**TIME:** 7:30 PM  
**Location:** CLEAR LAKE PARK BUILDING  
5001 NASA PARKWAY  
SEABROOK, TEXAS

**INDEX**

**PRESIDENTS MESSAGE.....1**  
**AUGUST MINUTES.....2**  
**ROCK SALE.....3**  
**FIELD TRIP.....4**  
**GEM SHOWS.....5**  
**EDITORS NOTE.....5**  
**EXPLORATION.....6**  
**RECIPE.....7**  
**BIRTHSTONE.....8**  
**BIRTHDAY.....8**  
**ANNIVERSARIES.....8**  
**PEBBLE PUPS.....9**  
**ACTIVITIES.....10**



**PRESIDENT'S MESSAGE**

The ice cream social at the August monthly meeting was a big hit. There were six flavors of ice cream and a dozen different toppings! To top it all off, we also had several members and visitors show off their rock and gem finds. Come to the September meeting and see what we have in store for you next!

Kim Christiansen has volunteered to serve as the Webmaster. Thanks Kim!

The position of Secretary is still vacant. The responsibilities of the Secretary are to attend general meetings and board meetings, take the minutes, and occasionally provide official documentation and representation for club business such as banking. This position requires only a few hours per month of your time.

We are also in need of a show publicity chairman to coordinate the printing and advertising for our annual show.

Now is the time to volunteer for one of the vacant positions in the club leadership or sign up for one of the committees. If you are willing to volunteer your time, please contact any officer or board member.

Many of you have great ideas that would make this club even better. If you have ideas for activities, field trips, programs or even procedure changes, then please share those ideas with us!

Sara Chelette  
President, CLGMS

**ROCK SHOPS**

**King's Gem Center** - 4714 F.M. 1960 West # 107 Houston, TX 77069-4611  
Phone : (281) 440-9939

Jeanne's Rock Shop – Phone: 713-664-2988 / Web :  
<http://jeannesrockshop.com>



This meeting Ed is going to talk about "magnifiers".

As we grow older, many of us (myself included), experience vision changes and we have to learn to cope and adapt to them.

What is the best way to do that for your rock hounding activities?

Ed has several dozen different kinds of optical magnifiers that he will discuss, plus some digital cameras, and a digital microscope.

If you have specimens you would like to bring in, he will discuss how to photograph them and take photos of them.

Part lecture, part hands on, part service to attendees.

**MINUTES OF THE AUGUST 19, 2013 MEETING OF THE CLEAR LAKE GEM AND MINERAL SOCIETY**

At 7:30 p.m. the meeting was called to order. After the Pledge of Allegiance, the group enjoyed an ice cream social while continuing the meeting.

Three visitors were present. Two new members joined after the meeting.

The July minutes were approved as submitted.

Newsletter Editor, Sandi Hill received applause for the newsletter, even though she was not there.

Kim Christiansen accepted webmaster position.

Treasurer's report – Trina reported a hold on the bank account due to an error that is now resolved. Storage was renewed and one month free received. We are changing to Chase Bank. The CD's earned \$7.00 in interest last year and the balance was \$19,404.04 when account was closed.

Newsletter Editor not present

Historian – David had nothing to report

Publicity – Bobbie reported she is working with College of the Mainland for guest speakers and help with the show.

Membership – Mike reported that we now have approximately 93 members, including three new members.

Sara reminded everyone of the next board of directors meeting on August 26<sup>th</sup> and invited any interested to attend but only directors can vote.

Budget Committee – Member Judy Bennett joined the budget committee. This committee has four members. The group will meet and produce a rough draft without a balance. This will be one of several drafts.

Constitution committee has three members.

Show Vendor Coordinator – Sandi sent out 40 emails and applications but heard back from only seven. Will send reminder emails.

The group acknowledged one of CLGMS's founding father's 86<sup>th</sup> birthday. Happy Birthday Bill Robinett!

New Business – A letter from the IRS was received stating our tax exempt status was revoked due to non-receipt of tax returns for past three years. These returns were submitted by Loyce in May. Mike reported the group could benefit from a CPA. Mike will speak to Loyce about the IRS issues.

A "Thank You" letter was received by a scholarship recipient of Texas A&M.

The group had a show and tell. Door prizes were given.

The meeting adjourned.

Respectfully submitted by

Bobbie LeFebvre, VP

\*\*\*\*\*

Clear Lake Gem & Mineral Society Directors and Committees Meeting Minutes

Monday August 26, 2013

1. 2014 Show Committee – Sandi not present. The group discussed needs and concerns for the show. There are 6 paid vendors, 1 who dropped and 1 in the process of signing up out of 40 vendors on the list. A telephone campaign is recommended to see if contracts sent in July were received. Sara will discuss with Sandi. Trina will check to see when the next payment is due to the convention center. Someone needs to check on the set up/take down vendor. The need for a template for the flyers was discussed.
2. Constitution Committee – Mike proposed that the group individually make a notation, and proposed changes/updates to the constitution and pass it out amongst the group. Mike will start it and the changes can be tracked.
3. September Cabochon Workshop – Jim was not present to discuss the needs for the workshop scheduled for September 14<sup>th</sup> at \$30 for members.
4. IRS Filing Update – Bobbie will contact Loyce and Nancy to see where we can locate the receipt and tax papers filed in May. This is the only way to prevent paying late fees and having to request our status be reinstated.
5. Board Meeting Schedule – Sara proposed we set one day for the board and committee meetings. The first Monday was proposed. Sara will poll the group to see what day and time is best.
6. 2014 Budget Committee – Bobbie brought a copy of the last budget. The group looked at the past budget and started by looking at items not standard to the budget. These items will be removed and the first draft budget will be presented. The budget can not be finalized until after the show to see final figures. Attached is the first budget draft containing items and allowances for groups. \*Note – This budget does not contain a starting balance. Until all accounts are arranged, a balance is not available. This process will take some time due to bank changes.

Respectfully submitted by

Bobbie LeFebvre, VP

**\*\*THE FIRST DRAFT BUDGET WILL BE HANDED OUT AT THE MEETING.\*\***

# ROCK SALE



The Clear Lake Gem & Mineral Society will be going on a field trip to this rock sale!  
We should start planning some car pools and spread the word to club members.

It is that time of year again. Keith Harmon is having his back yard rock and equipment sale on September 21, 2013 starting at 9 AM. Where? 9116 US Hwy 84 West, Rusk TX 75785. Phone numbers: Home: 903-795-3860, Cell: 903-316-2967.

What's for sale: about 40 tons of rock, 10 tons of new rock he picked up this last spring.

Equipment: all kinds of saws, grinders, polishers, and sphere maker machines.

Prices: very reasonable.

How to get here: From Tyler go south on Hwy 69 to Rusk. Turn right on hwy 84, the hwy turns right at the square. Follow 84 west for about 4 miles to the general store at Oakland, keep going west on 84 for two miles. When you get to CR 1702 on your right, go past it for 100 yards and my driveway will be on your right. Go thru the gate to the pasture and out to the barn.

From Dallas - Fort Worth. Two options; Take Hwy 175 east to Jacksonville TX then Hwy 69 south to Rusk and follow the above directions.

Or: take hwy 287 south to Palestine, TX take the loop to the left and go to Hwy 84 east. Turn left on 84 and go approx. 22 miles. You will go thru Maydelle TX and that is about 2miles from my house which will be on your left.

From Houston: take hwy 59 North to Lufkin and then take Hwy 69 North to Rusk. Take hwy 84 west and follow the directions above for Tyler once you get to Rusk.

From Austin: Go to Waco and take Hwy 84 East to Palestine, Take the loop to the right and go to Hwy 84 East. Follow the directions from Dallas Ft. Worth above- go to Maydelle then my place.

Looking forward to seeing everyone.  
Keith

# Upcoming Field Trip

Update for Walker Ranch Rockhunt, October 11 - 13, 2013.

As of now, we have 19 people signed up plus 7 maybes. Here's the list of people who have signed up. If you've sent me an email and are not on the list, please email me again.

Allen, Randy: 1 person for 3 days  
 Allison, Linda 1 person for 2 days  
 Ash, Bill 2 people for 3 days  
 Brownfield, Steve & Annabel 2 people for 3 days  
 Dillon, Matt 1 person for 3 days  
 French, Johnny 1 person for 3 days  
 Green, Ralph 1 person for 3 days  
 Herrick, James 1 person for 3 days  
 Houston, Travis & Alfreda 2 people for 3 days  
 Kendall, Jim 1 person for 3 days  
 Maple, Julia 1 person for 3 days  
 Martin, Brice and Mary, 2 people for 3 days  
 Tindell, Ed 1 person for 3 days  
 Waugh, Steve 1 person for 3 days  
 Welch, Bob 1 person for 3 days

Maybes

Roberts, Terry 3 people for 3 days  
 B. & K. Herman  
 C. & P. Moore

I'll be out of town from 6th to 23rd, so there will be no emails from me in that time.

As I haven't heard from everyone I expect to hear from, I believe the trip will take place. So send in your deposits! If you decide to go between now and the 23rd, send me the deposit and I'll add you to the list when I get back.

If you are planning to attend the hunt, please send me your deposit of \$75 per person. Make the check out to Bryan Crumpton, and send it to me, Teri Smith, at 509 N. 8th Street, Alpine, TX 79830. If the field trip does not happen, I'll either void checks and destroy them, or void them and mail them back to you (your choice).

For those who are interested, dry camping on ranch is okay, either with a tent or a small trailer or RV. Large trailers and RVs may have difficulty with the road coming in.

I am working on other field trips around the same time. There's also a possibility that the Walker Ranch can be open during the week before the announced field trip for a couple of days, if you want to hunt longer than 3 days, or can't make it on the weekend. If you wish to hunt longer at the Walker, or at other places while you're out here, please include that information with your deposit or send me an email. I'll try to make it all happen!

Hope to hear from a bunch of you soon. We had a great time during the spring hunt, and lots of spectacular rocks were found. It should be just as much fun this time!

Regards,  
 Teri

SCFMS and MEMBER CLUB GEM SHOWS

September 14-15 Arlington, TX Arlington Gem & Mineral Society, 1010 Event Center	September 21-22 Denison, TX Texoma Rockhounds Dennison Sr. Ctr.	September 28-29 Dallas, TX Dallas G&MS Restiol Expo Ctr Mesquite, TX
October 12-13 Temple, TX Tri City G&MS Mayborn Civic Ctr.	October 12-13 Fort Worth, TX Lockheed Martin RA Stone Steppers LMRA Picnic Area 3400 Bryant Irvin Rd	October 18-20 Austin, TX Austin G&MS Palmer Events Ctr.
October 18-20 Victoria, TX Community Ctr. 2905 E North St	October 19-20 Amarillo, TX Golden Spread G&MS Amarillo Civic Ctr.	November 2-3 Midland, TX Midland G&MS Midland Ctr.
November 8-10 Humble, TX Houston G&MS Humble Civic Ctr. 8233 Will Clayton Prkwy	Nov 30-Dec 1 Round Rock, TX Paleontological Soc. Of Austin Old Settlers Park Hwy 29 E Round Rock, TX	December 7-8 DeRidder, LA DeRidder G&MS Beaugard Parish Fairgrounds 506 West Dr.

**INSTANT WEATHER**

Place a string around a smooth polished rock, hang it on three sticks and exposed it to the elements.

Follow guidelines below for an instant weather report:

If Rock is Wet, it's Raining.

If Rock is Swaying, it's Windy.

If Rock is Hot, it's Sunny.

If Rock is Cool, it's Overcast.

If Rock is White, it's Snowing.

If Rock is Blue, it's Cold.

If Rock is Shaking, it's an Earthquake!

If Rock is Gone, there's been a Tornado!

From AFMS Newsletter, 5/97

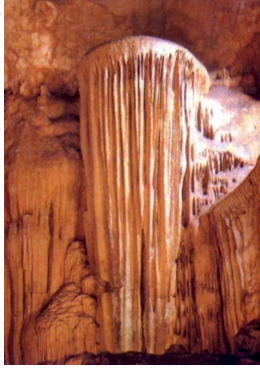


***Have any ideas on how to make the newsletter better? Email them to me at [sbstardust3@gmail.com](mailto:sbstardust3@gmail.com)***

***The newsletter is emailed out 1 week before the meeting, so please have all articles or contributing information to me by then or it will not be added until the following newsletter.***

***Thank You  
Sandi  
Newsletter Editor***

# Exploration



## **BRISTOL CAVERNS; Bristol, TN**

(open year round)

Far below the earth’s surface, in the timeless beauty of Bristol Caverns, a strange and exciting experience awaits you. Paved, well-lighted walkways wind through the vaulted chambers and along the surging underground river that carved these remarkable caverns from the hard core of the earth.

You will explore the vast rooms with arches, columns, and natural stone formations of limitless variety. These formations display rich veins of red, blue, gray, brown, and sparkling white woven into a spectacular display.

Stalactites and stalagmites, some larger than tree trunks, others smaller than straws, create a fascinating display that gives play to the imagination. Massive columns have been formed from floor to ceiling of the lofty rooms where these formations come together.

With every view, nature’s artistry is revealed in the remarkable tumbling cascades and billowing draperies of solid stone. An elaborate system of concealed, indirect lighting highlights the natural colors and beauty of the formations and dramatically displays the formations reflected in the underground river. Bring your camera! Preserve memories of your trip to the mysterious and majestic Bristol Caverns!

**For more info go to:** [www.bristolcaverns.com](http://www.bristolcaverns.com)

\*\*\*\*\*

## **THE LOST SEA; Sweetwater, TN**

(open year round)



While here you will be fascinated by strange and unusual rock formations, admire the colorful and rare Anthodites (a Greek word meaning cave flower) found in only a few caves throughout the world, see one of a kind formations around every corner, pause for a moment of reflection in for of Crystal Falls and take a boat ride across America’s largest underground lake on a glass bottom boat.

**For more info go to:** [www.thelostsea.com](http://www.thelostsea.com)

\*\*\*\*\*

## **TROGLOBITES**

(in keeping with the cave theme)



Troglobites are small creatures that have adapted to a permanent life in a cave. They are so well adapted to life in a cave that they would be unable to survive in the surface environment. To survive in the darkness, troglobites have highly developed senses of hearing, touch and smell.

The darkness of the cave eliminates their need for sight. As a result, they are usually blind with undeveloped eyes that might be covered by a layer of skin. The darkness eliminates the advantage of camouflage coloring and many troglobites are albino.

Many types of animals have evolved into troglobites. Some of the most familiar types are spiders, beetles, gastropods, fish, millipedes, and salamanders. Over 7700 species of troglobites have been discovered. Although that might sound like a surprisingly high number, researchers believe that it is just a small fraction of the total number of Earth’s troglobite species. This number is low because many caves have been poorly explored and even fewer have had a thorough biological census. More importantly the number of caves that have been discovered is thought to be just a tiny fraction of all of the caves that exist.

Most troglobites are sedentary organisms that do not burn a lot of calories. They obtain most of their food from scavenging. Their diet might include: small pieces of plant debris carried into the cave by running water, bacteria and plankton that live in cave waters carcasses of animals that have died in the cave, the feces of other animals scavenged from the cave floor. Bat guano can be the primary food for troglobites living in caves with an active bat population.

# RECIPES



- 1       tablespoon(s) olive oil, plus more for the baking sheet and foil
- 1       large egg
- 2       egg whites
- 1       cup(s) panko bread crumbs
- 1/2     cup(s) all-purpose flour
- 2       medium (about 2 1/4 pounds total) eggplants
- 1       container(s) (16-ounce) lowfat small-curd cottage cheese
- 1       container(s) (15-ounce) part-skim ricotta
- 6       ounce(s) part-skim mozzarella, grated (1 1/2 cups)
- 1/2     cup(s) grated Romano or Parmesan cheese
- 2       tablespoon(s) grated Romano or Parmesan cheese
- Black pepper
- 1       cup(s) roughly chopped fresh basil
- 1/2     cup(s) roughly chopped fresh flat-leaf parsley
- 2 1/2   cup(s) jarred marinara sauce

## *Directions*

Heat oven to 450 degrees F. Lightly oil two large rimmed baking sheets. Beat the egg and egg whites together in a shallow bowl. Place the bread crumbs and flour in separate shallow bowls. Add 1 tablespoon oil to the bread crumbs and mix to combine. Slice the eggplants into 1/2-inch-thick rounds. Dip the eggplant rounds in the flour, then the eggs (letting any excess drip off), and finally in the bread crumb mixture, pressing gently to help them adhere; transfer to the prepared baking sheets. Roast until the eggplant is golden brown, 15 to 20 minutes. Reduce oven temperature to 400 degrees F.

Meanwhile, in a large bowl, combine the cottage cheese, ricotta, 1 cup mozzarella, 1/2 cup Romano, and 1/2 teaspoon pepper. Fold in the basil and parsley.

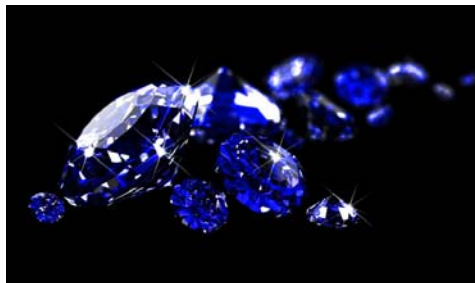
Spread 1/2 cup marinara on the bottom of a 9- by 13-inch baking dish. Top with a layer of eggplant (8 to 12 slices) and 1/2 cup marinara, and dollop with a third of the ricotta mixture (about 1 1/2 cups). Repeat eggplant, marinara, and ricotta layers twice. Top with the remaining 1/2 cup marinara. Sprinkle with the remaining 1/2 cup mozzarella and 2 tablespoons Romano.

Cover the dish tightly with an oiled piece of foil and bake for 20 minutes. Uncover and bake until the top is light golden brown, 20 to 25 minutes more. Let stand for 10 minutes before serving.

## *Tips & Techniques*

**Make It Ahead:** Line the baking dish with foil, leaving a 3-inch overhang on two sides. Prepare the lasagna as directed. After baking, allow it to cool in the dish. Use the overhangs to lift it out; wrap tightly in plastic, then foil, and freeze for up to 2 months. To serve: Let thaw in the refrigerator, remove the foil and plastic, and transfer the lasagna to a casserole dish. Reheat in a 375 degree F oven, about 20 minutes.

Birthdays  
Anniversaries  
September



### SAPPHIRE

**Why the color of a Birthstone is important:**

The Color of Birthstones relates to rarity, value and the quality of a gemstone. Birthstone colors are therefore extremely important to consider when purchasing a piece of jewelry containing precious or semi-precious gemstones.

**Symbolism and Meaning of the Birthstone Color for September:**

Individual Birthstones colors, such as the Sapphire, also has special attributes. The meaning behind birthstones colors were symbolized by their association with events which occurred in history, many of which date back, and relate to, the biblical meanings of colors. The Christian meaning of Deep Blue was highly symbolic. From Ancient times wise men and healers have believed that jewels and gemstones, such as the Sapphire, have mystical powers and conduct the energies of the ruling planets with which each gemstone is associated which affect our physical or emotional well being and healing powers. Gemstones and their attributes were related to signs of the Zodiac or month of birth and referred to as Birthstones. The symbolism and meaning of the Birthstone Color for September is as follows:

The color blue has a Biblical meaning symbolizing heavenly grace. The Virgin Mary is often depicted wearing blue clothing.

**Facts and Information about Birthstone Color for September:**

Birthstone Color for September - Deep Blue

**Why the color of a Birthstone is important**

The Color of Birthstones relates to rarity, value and the quality of a gemstone. Birthstone colors are therefore extremely important to consider when purchasing a piece of jewelry containing precious or semi-precious gemstones.

**Facts and information about the Birthstone Color for September:**

- \*September Gemstone: Sapphire
- \*September Birthstone Color: Deep Blue / Indigo
- \*Zodiac Sign: Virgo
- \*Virgo dates: August 23 - September 22
- \*Sapphires come in a wide range of natural colors and shades
- \*Sapphires are available in every color but red
- \*Sapphires in colors other than blue are often referred to as fancy sapphires
- \*The most valuable sapphires have a medium intense, vivid blue color
- \*The color of Indigo is a deep, rich dark blue and sometimes referred to as Royal Blue with its obvious connotation
- \*The symbolic meaning of the color indigo is power, importance and wealth
- \*Blue Colors are caused by the presence of the element Boron (B) which changes the conductivity of the gemstones

<http://www.birthdaygems.org/birthstone-colors/birthstone-color-for-september.htm>



## Birthdays

- Mary Rathjen.....9/4
- Sid Smith.....9/4
- Jim Wines.....9/7
- Sharon Choens.....9/17
- Bryan Carter.....9/26
- Julia Carter.....9/26
- Bernice Timme.....9/30

## Anniversaries

Vince Garcia.....9/11

Sorry I don't know your spouses' name, but we wish you both a very Happy Anniversary!



# Pebble Pups



# Corner

## LINKS FOR SOME FUN GAMES

<http://www.rocksforkids.com/RFK/identification.html>

<http://www.kidsloverocks.com/html/mineral.html>

## 3 Rock Types

1. Igneous - having solidified from lava or magma.
2. Sedimentary - is a type of rock that is found on the surface of the Earth and in bodies of water. Sedimentary rocks are formed by the accumulation of mineral and organic particles.
3. Metamorphic – rock that has undergone transformation by heat, pressure , or other natural agencies.

## What is a mineral?

***A mineral, by definition, is . . .***

***Inorganic: means that it is not made by a living organism.***

***A solid means there is one unusual exception. Native mercury is a mineral and is the only metal that is a liquid at normal temperatures.***

***Has a regular crystal structure. The crystal structures are described as crystal systems.***

***Made by nature which means minerals are not made, directly or indirectly, from human activity.  
Has a predictable chemical formula.***

## ***Fun activity for kids (answers on page 10)***

***See if you can find out which of the following are minerals?***

***Cubic Zirconia***

***Diamond***

***Fluorite***

***Galena***

***Graphite***

***Ice Cubes***

***Pyrite (“Fool’s Gold”)***

***Ruby***

***Snow***

<http://www.kidsloverocks.com/html/mineral.html>

# Activities



*The Clear Lake Gem and Mineral Society Cabochon Workshop scheduled for September 14, 2013, has been CANCELLED. We will reschedule this workshop in the near future. We apologize for any inconvenience.*

*Thank you,  
Sara Chelette  
CLGMS President*

## Answers to mineral questions on pg 9

Is Cubic Zirconia a mineral? Answer: No

Why? Cubic Zirconia is a lab-grown diamond substitute, which is used as a “gemstone.” Because it is man made, it does not pass the 4th rule.

Is a Diamond a mineral? Answer: Yes!

A Diamond passes all of the requirements necessary to be defined as a mineral.

Is Fluorite a mineral? Answer: Yes!

Fluorite passes all of the requirements necessary to be defined as a mineral.

Is Galena a mineral? Answer: Yes!

Galena passes all of the requirements necessary to be defined as a mineral.

Is Graphite a mineral? Answer: It depends.

If the Graphite is natural, then it is considered a mineral. When it is made in a laboratory, it is not, because it can not pass rule number 4.

Is an ice cube a mineral? Answer: No

Why? Because ice cubes are not natural. They are made by humans with the use of a freezer.

Is Pyrite (“Fool’s Gold”) a mineral? Answer: Yes!

Pyrite passes all of the requirements necessary to be defined as a mineral.

Is a Ruby a mineral? Answer: Yes!

A Ruby passes all of the requirements necessary to be defined as a mineral.

Is snow a Mineral? Answer: Yes!

Snow passes all of the requirements necessary to be defined as a mineral.

(postage)

**STONEY STATEMENTS**

Clear Lake Gem & Mineral Society, Inc.  
PO BOX 1533  
Houston, Texas 77289

Meeting 3<sup>rd</sup> Monday of the Month  
7:30 PM  
Clear Lake Park Building 5  
5001 NASA Road One, Seabrook, Texas



**NEXT ANNUAL SHOW**  
**March 8-9, 2014**  
**Pasadena Convention Center**  
**Can't wait to SEE YOU**  
**THERE!!**

Member of:

**JOIN US ON THE WEB!!!!!!**

<http://www.clgms.org>

<https://www.facebook.com/pages/ClearLake-Gem-Mineral-Society/612663482095512>



**Clear Lake Gem and Mineral Society, Inc**

MEMBER: American Federation of Mineralogical Societies and South Central Federation of Mineral Societies

PURPOSE: To promote education and popular interest in the carious earth sciences; in particular in those hobbies dealing with the art of lapidaries and the earth sciences of minerals, fossils and their associated fields.

2013 OFFICERS:	President	Sara Chelette	281-286-1195
	Vice President	Bobbie LeFebvre	409-998-3002
	Secretary	Ben Dugger (Pro Team)	281-316-6710
	Treasurer	Trina Willoughby	281-218-0976
	Program Director	Ed Tindell	281-415-7164
	Board of Directors	Ed Tindell	Jim Wined
		Shannon Oliver	Bob Brock
	Newsletter Editor	Sandi Hill	

Annual Show 2014 Vendor Coord.....	Sandy Christiansen	Library.....	Shannon Oliver
Const & By Laws.....	Sara Chelette	Membership.....	Mike Flannigan
Community Benefits.....	Nancy Duggar	Publisher.....	Sandi Hill
Historian.....	David Tjiok	Refreshments.....	David Tjiok
Publicity.....	Bobbie LeFebvre	Education/Field Trips.....	Ed Tindell

Membership Dues Jan. to Dec. 2013: Adult \$10.00, \$5.00 per additional adult at same address, Junior \$5.00, \$2.50 per member with adult at same address, Family Dues \$20.00 (4+) at same address. Send Dues to CLGMS, PO BOX 891533, Houston, TX 77289

Permission to use material originating in this newsletter is freely given providing credit is given author and Stoney Statements except if the article requires authorization (CRA). Permission may be obtained by E-mailing Editor.